

## ARBORETUM BUSINESS CENTER RESTRUCTURES, EXPANDS FOR IMPROVED CUSTOMER SERVICE

Now in its eighth year, Arboretum Business Center, staffed by Hill Arboretum residents, has restructured to provide expanded, customer-centered services to a wide range of clients. Rainbow Managers Dorothy Archer and Theresa Phillips are now providing oversight for the center.

"We complete bulk mail projects of all complexities at very competitive cost," noted Dorothy. "Our people also do data entry and mailing list maintenance."

Longstanding Arboretum Business Center clients include Lilac Tree, Phoenix Security and Custer Street Fair.

We also thank several former clients, including Grumman Butkus Associates and Archiworks, that recently returned to ABC.

"When businesses choose Arboretum Business Center, they receive great service, while putting to work some dedicated people who achieve top quality despite their disabilities," added Theresa. "It's a real win-win situation."

Rainbow thanks and bids fond farewell to **MICHAEL McCARTHY**, who recently left ABC as Director, for his many years of dedicated service.

To discuss your projects, ABC services and rates, call 847.328.6922.

## RAINBOW WELCOMES NEW STRATEGIC PLANNER

New to Rainbow's Strategic Planning Committee is **MICHAEL SULLIVAN**, a lawyer with Pedersen & Houpt who represents, among others, prominent real estate developers in financing, acquisitions, development, sales and leasing transactions. He received a J.D. degree from Loyola University and B.S. in Business from Miami University of Ohio.

**In Memoriam**  
Ivor Denby  
1937 - 2003  
Hill Arboretum Resident  
Dedicated Worker  
Good Friend and Neighbor  
May he rest in peace.

## YOUR USED STUFF IS OUR STUFF OF DREAMS

Residents of Rainbow apartments need donations of clothing, furniture and home accessories to enhance their quality of life. When donors appear with gently used belongings, residents snap them up quickly. Any goods that remain are offered during Rainbow's spring and summer rummage sales.

This is a call for clean men's and women's clothing for all seasons, twin

bedding and towels. Small appliances in good working order, TVs, furniture, lamps and art are also welcome.

And the Tenants' Association reports that board games, puzzles, novels, playing cards, video tapes and DVDs are in demand.

To arrange delivery to Hill Arboretum, 2040 Brown Avenue, Evanston, Illinois 60201, call Director of Operations Leo Kirwan at 847.328.6633.

## BOARD OF DIRECTORS

Donald Gustafson <i>Chairman Emeritus</i>	A. Richard Busscher
Eduard Bjorncrantz <i>Chairman</i>	John Cammelot
Thomas Wiegand <i>Executive Vice President</i>	George Elder
Joe Dunn	Robert Fallon
Sandy Herbst	Mark Gruen
Edwin Wittenstein <i>Vice Presidents</i>	Susan Gustafson
Arthur Berlin <i>Vice President/ Treasurer</i>	Matthew Howard
Lita Passen <i>Secretary</i>	Mary Ann King
Gerry Boone	Leo Kirwan
A. Brad Busscher	James Kleeberg
	Irene Landau
	Ian McPherson
	Judith Bultman Meyer
	William Monahan
	Marv Stern

## RAINBOW STAFF

Eric Huffman <i>Executive Director</i>
Leo Kirwan <i>Director of Operations</i>
Theresa Phillips <i>Development Manager</i>
Dorothy Archer <i>Property Manager</i>
Amy Royer <i>Social Service Coordinator</i>
Teresa Collins <i>Hill Arboretum and Belden Apartments Maintenance</i>
Charlene Hall <i>Night Supervisor</i>
Sheila Smith <i>Kitchen Supervisor</i>

**OVER THE RAINBOW ASSOCIATION**  
847.328.6633

OVER THE RAINBOW ASSOCIATION  
A Not-For-Profit Organization

# RAINBOW REPORT

SPRING 2003  
BUILDING TO HELP PEOPLE WITH  
PHYSICAL DISABILITIES HELP THEMSELVES

Dear Friends:

Great progress is under way at Rainbow. As described inside, we soon expect to secure a site for a new barrier-free



**Ed Bjorncrantz**

apartment building. We have formed a partnership with a Minnesota-based developer whose proven expertise in delivering accessible housing across the country complements Rainbow's own success here in Chicago and at the federal government level.

We also have solidified the interest of State of Illinois and City of Chicago officials for additional Rainbow housing.

In the meantime, our staff continues to serve the needs of the current residents of Rainbow's Hill Arboretum and Belden Apartments.

All of these activities are made possible by the indispensable support of generous individuals, corporations and foundations. We are proud of the stature and dedication of our Board, staff and many volunteers and invite you to consider how you might play a role in Rainbow's future. We welcome your ideas.

Gratefully,

Eduard Bjorncrantz  
*Board Chairman*

## INSIDE

News of Rainbow's Favorite Stars	2
Development Partnership Formed	2
Construction Projects Funded	2
Testimony Before State Assembly	3
Predevelopment Activities	3
Spotlight on Rainbow Supporters	3
Business Center News	4
New Strategic Planner	4
Clothing, Other Donations Needed	4
In Memoriam	4
Rainbow Board and Staff	4

## REC ROOM MAKES BELDEN EVEN BETTER

### Group Effort Yields Great Results

Rainbow's award-winning Belden Apartments at Halsted and Belden, Chicago, completed in 1982, was the city's first accessible apartment building exclusively for adults who use wheelchairs. There are eleven tenants and a long waiting list for residency.

Recently Rainbow Property Manager Dorothy Archer oversaw the addition of a rec room on Belden's lower level, while Development Manager Theresa Phillips was in charge of soliciting donations. Friends of Board member Sandy Herbst and volunteer Lori Twombly donated furnishings, and now the previously unfinished space has a linoleum floor, painted walls, sofas, chairs, tables, lamps, recessed lighting, a TV/VCR, microwave and coffee maker. In an adjacent

space are computer stations and bookcases. Construction of a barrier-free restroom for the use of tenants and visitors is also planned.

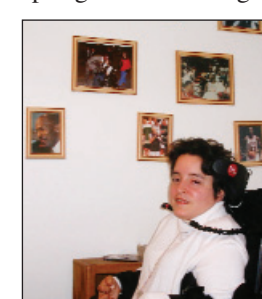
Thanks to all who contributed to the success of this project.



Residents enjoying a pizza party, from left, Tim Sullivan, Barb Wesolek, Tuge Williams, Margaret Holzer and Shirley Korenchan.

## CARMEN VILLAFANE TAKES ACTION

Carmen Villafane, who has cerebral palsy, moved to Belden Apartments last spring and is thriving in her barrier-free



Rainbow apartment. She is a data entry clerk at West Side VA Hospital. And avid Bulls fans know Carmen as the fan who sat next to the Bulls bench and befriended Michael Jordan. Her story is covered in the book, *Hang Time*.

Rainbow apartment. She is a data entry clerk at West Side VA Hospital. And avid Bulls fans know Carmen as the fan who sat next to the Bulls bench and befriended Michael Jordan. Her story is covered in the book, *Hang Time*.

Carmen volunteers at Chicago's Illinois Center for Rehabilitation and Education, home to dozens of students who also receive a public school education, physical rehab and training for transition into the community. In the past, she helped secure a \$10,000 grant from Michael Jordan for ICRE. More recently, when Illinois budget cuts threatened to close the facility, Carmen joined students in a protest at the State of Illinois Center and ultimately celebrated the decision to keep ICRE open. Without ICRE, the students would have been transferred to expensive, inaccessible nursing homes.

A salute to this energetic young woman!



Rainbow is actively seeking volunteers willing to offer their time and talents to assist tenants with a wide variety of activities. Please call Amy Royer, Rainbow's Social Service Coordinator, at 847.328.6757.

Not-For-Profit Organization  
U.S. Postage Paid  
Evanston, Illinois  
Permit No. 300

Over The Rainbow Association  
2040 Brown Avenue  
Evanston, IL 60201



# STAR TREATMENT

Favorite opera stars from recent CELEBRATION concerts, Rainbow's annual fund-raiser, are shining brightly.

**NANCY GUSTAFSON** was named a Kammersangerin by the Cultural Secretary of Austria. The recognition—one of the highest in opera—was presented at the opening of *Johnny Spielt Auf* at the



From left at the award presentation are Ioan Holender, General Director of the Vienna State Opera, Maestro Seiji Ozawa, the Opera's Music Director, Nancy Gustafson, and Franz Morak, the Austrian Minister of Culture.

Vienna State Opera. Director Ioan Holender noted that Nancy has not shrunk from any role at the famed repertory house, including leading roles in *Arabella*, *Ariadne Auf Naxos*, *Rienzi*, *Herodiade*, *Peter Grimes*, *William Tell*, *La Traviata*, *Tales of Hoffman*, *Die Fledermaus* and *The Merry Widow*. Ms. Gustafson said her "love affair with the Vienna State Opera would go on forever."

When Evanston (Illinois) Township High School, for the first time ever, elected to honor a small group—among its 39,000 graduates—to receive a Distinguished Alumni Award, **NANCY GUSTAFSON** found herself in good company that included the late George W. Ball, Undersecretary of State for Presidents Kennedy and Johnson; George Conn, who has propelled his paraplegia into activism on behalf of people with disabilities; Dr. John Bryson Eulenberg, a linguist who has developed computer-assisted technology to give voice to disabled computer users; Dr. Charles Johnson, honored on a postage stamp series among 12 influential black authors of the 20th century; Gordon Segal, Crate & Barrel founder and CEO; and Dr. Charles R. Thomas, nationally renowned educator and ETHS's first African-American teacher and administrator.

Leading the applause following a **DENYCE GRAVES** concert at Naples, Florida's Philharmonic Center for the Arts earlier this year were Rainbow Board members Don Gustafson and Jim Kleeberg, Eileen Kleeberg, Horst and Sandy Metz (Rainbow supporters extraordinaire), and Executive Director Eric Huffman. Denyce, in a stunning red gown, won this praise from a local music critic, "For over two hours, I was transfixed. [She] left me so weak with wonder I didn't know how I'd be able to rise to my feet to give her a well-deserved standing ovation by concert's end."



Denyce Graves



← **NATHAN GUNN**, the acclaimed baritone who made his first appearance in CELEBRATION 2002, also has appeared at Rainbow's Hill Arboretum. What a wonderful treat for the staff and residents alike. After touring the building, Mr. Gunn (shown standing in the photo at left) joined Director of Operations Leo Kirwan (seated), and, standing from left, Development Manager Theresa Phillips, and Rainbow friends Dorothy Byrne and Mary Jane Arnold in Arboretum Business Center.

## RAINBOW PARTNERS WITH ACCESSIBLE SPACE TO ADVANCE BUILDING GOALS

Over The Rainbow Association has formed a strategic partnership with the St. Paul, Minnesota-based, not-for-profit Accessible Space, Inc. to undertake development of one or more barrier-free housing projects.

Founded in 1978, Accessible Space, in collaboration with other organizations, builds barrier-free dwellings on a national scale. The organization shares with its partners, now numbering more than 40, a proven expertise in all facets of project development and management. In return, community-based groups bring to the partnership a personal passion, committed staff, influential volunteers, a familiarity with local market conditions and government officials, and fund-raising capability. Such collaborations have proven highly successful in meeting the growing demand for housing specifically designed for adults with disabilities.

Rainbow currently is completing a grant request to secure Section 8 funds for the first project by the Rainbow/Accessible Space partnership.

### SEEKING PROPERTIES FOR DEVELOPMENT

Over The Rainbow Association is soliciting information on available land sites suitable for development and on buildings that could be adapted for reuse as barrier-free apartment buildings. Our goal: To secure properties at minimum cost. Current preferred locations: Chicago and North/Northwest suburbs. PLEASE CALL ERIC HUFFMAN AT 847.328.8140 OR 847.328.6633.

### CONSTRUCTION PROJECTS FUNDED

Thanks to a Community Development Block Grant from the City of Evanston and funding provided by the Department of Housing & Urban Development (HUD), Rainbow this summer will be able to undertake total roof replacement projects at both Hill Arboretum and Belden Apartments.

Preventive maintenance and repair and replacement programs such as these are part of Rainbow's ongoing management and operational responsibilities. Director of Operations Leo Kirwan and Property Manager Dorothy Archer will oversee the project contractors, timetables and quality control.

## TESTIMONY BEFORE THE ILLINOIS GENERAL ASSEMBLY

Rainbow has taken its case for affordable, barrier-free housing to the Illinois General Assembly's Urban Revitalization Committee. In testimony by Executive Director Eric Huffman and Director of Operations Leo Kirwan, Rainbow asserted in part that:

- ◆ Ten people with severe disabilities could live independently in barrier-free housing for the same cost as four people inappropriately placed in institutions.
  - ◆ Of 101,312 people institutionalized in long-term care facilities in Illinois, 6,000 to 10,000 are severely physically disabled.
  - ◆ Taxpayers could save \$67,000/year for each person moved from a nursing home to independent living.
  - ◆ Construction of 3,000 barrier-free apartments would cost \$375,000,000.
  - ◆ Full construction cost payback on these apartments would take just 22 months.
  - ◆ Rainbow requested that the State now fund construction of 300 such units per year over four years.
- Rainbow urges a coordinated plan by federal, state and local funding sources and, to this end, asks supporters to contact their state representatives.

### HUFFMAN DESCRIBES UPCOMING DEVELOPMENT PLANS

Within the context of Rainbow's affiliate program, reports Executive Director Eric Huffman, a primary objective locally is the development of two apartment buildings in the Chicago area. These buildings will be affordable, barrier-free (i.e., universally designed) and community-based. They also are likely to integrate apartments for people with and without disabilities.

With help from Chicago's Department of Planning and several northwest suburban municipalities, site acquisition is in process. Requests for proposals have been sent to architectural firms for design development. Rainbow is also working with Mayor Daley's Office for People with Disabilities on mixed financing that combines federal, state and municipal support in the form of property donations, tax credits, loans and grants. Further progress details will follow.



## SPOTLIGHT ON RAINBOW SUPPORTERS

Noting the accomplishments of Rainbow supporters, a new Rainbow volunteer recently said, "I'd be honored to join this group of people." Please consider the stature of some current Rainbow Board members and volunteers.

**MARY ANN KING**, a Rainbow Board member since 1987, was recently appointed, along with Chicago philanthropist Penny Pritzker, a Trustee of the Urban Land Institute. The 17,000-member ULI, founded in 1936, supports those engaged in entrepreneurial and collaborative real estate development and land-use policy-making. ULI's mission is to provide responsible leadership in the use of land in order to enhance the total environment. Mary Ann, of Newport Beach, California, also was recently named President of Chicago-based



Mary Ann King and Charles Shaw

Moran & Company.

Another ULI leader is long-time Rainbow supporter and two-time Chair of Rainbow's CELEBRATION fund-raiser **CHARLES H. SHAW**, who has been ULI Chairman and Trustee.

### MEMORY LANE

At the invitation of HUD's **JOHN ROBINSON**, one present and five former employees of Sears, Roebuck and Co. visited Hill Arboretum to make a donation from Sears disAbled Associate Network and to establish and refresh commitments to Rainbow.

**TONY NORRIS** is a Senior Systems Specialist and Chairman of Sears' disAbled Association Network, which builds awareness of associates with disabilities and generates, disseminates and promotes knowledge and understanding so that disabled associates can grow professionally and personally.

Tony has been disabled since a tumor wrapped around his spinal cord in 1988, two years after he ran in the Chicago Marathon. Following a year of rehabilitation, at age 42 he faced life in a wheelchair. Then a Sears supervisor called and asked the former 18-year employee, "What would it take to get you back to work?"

Sears is a proponent of workplace diversity and enhancements to physical accommodations and technology for employees with disabilities. In 2002, Tony celebrated his 32nd employment anniversary with the company.

The five Sears retirees who visited with Tony included **CHUCK HARRISON** and **GENE JOSEPHSON**, engineers on the design team for Hill Arboretum's kitchens and appliances in the late eighties. Also attending were **BILL BARKER**, who visited the building on completion in 1990 and have supported Rainbow ever since. In addition, there were **PAUL SCHER**, a former HR executive who is vision-impaired and dedicated his talents to employment opportunities for people with disabilities, and **JUDD SACKHEIM**, an early contributor to Rainbow.

At Hill Arboretum discussing past achievements and future plans for Rainbow were, from left, Caroline and Bill Barker, Rainbow Property Manager Dorothy Archer, Gene Josephson, Chuck Harrison, Rainbow Board member Joe Dunn, Tony Norris, Rainbow Board Chairman Ed Bjorncrantz, Executive Director Eric Huffman, ← Paul and Ann Scher, and Judd Sackheim.